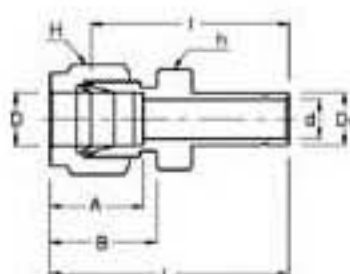


## SR Reducer

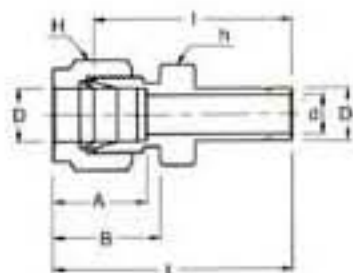


### Connects Fractional Tubes To Fractional SUPERLOK Port

Part No.	Tube O.D.		d Min	Width Across Flat		A	B	I	L
	D	D <sub>1</sub>		h	H				
SR 2- 1	1/8	1/16	0.76	7/16	7/16	12.70	15.24	22.35	28.95
SR 2- 2	1/8	1/8	2.03	7/16	7/16	12.70	15.24	26.92	33.52
SR 2- 3	1/8	3/16	2.28	7/16	7/16	12.70	15.24	27.68	34.29
SR 2- 4	1/8	1/4	2.28	7/16	7/16	12.70	15.24	29.46	36.06
SR 2- 6	1/8	3/8	2.28	7/16	7/16	12.70	15.24	30.98	37.59
SR 2- 8	1/8	1/2	2.28	9/16	7/16	12.70	15.24	37.59	44.19
SR 3- 2	3/16	1/8	2.03	7/16	1/2	13.71	16.00	28.19	34.79
SR 3- 4	3/16	1/4	3.04	7/16	1/2	13.71	16.00	30.48	37.08
SR 4- 2	1/4	1/8	2.03	1/2	9/16	15.24	17.78	29.46	36.83
SR 4- 3	1/4	3/16	3.04	1/2	9/16	15.24	17.78	30.22	37.59
SR 4- 4	1/4	1/4	4.82	1/2	9/16	15.24	17.78	31.75	39.11
SR 4- 5	1/4	5/16	4.82	1/2	9/16	15.24	17.78	32.51	39.87
SR 4- 6	1/4	3/8	4.82	1/2	9/16	15.24	17.78	33.27	40.64
SR 4- 8	1/4	1/2	4.82	9/16	9/16	15.24	17.78	38.86	46.22
SR 4-10	1/4	5/8	4.82	11/16	9/16	15.24	17.78	40.64	48.00
SR 4-12	1/4	3/4	4.82	13/16	9/16	15.24	17.78	40.38	47.75
SR 5- 6	5/16	3/8	6.35	9/16	5/8	16.25	18.54	34.54	41.91
SR 5- 8	5/16	1/2	6.35	9/16	5/8	16.25	18.54	40.13	47.49
SR 6- 4	3/8	1/4	4.82	5/8	11/16	16.76	19.30	34.03	41.40
SR 6- 6	3/8	3/8	7.11	5/8	11/16	16.76	19.30	35.81	43.18
SR 6- 8	3/8	1/2	7.11	5/8	11/16	16.76	19.30	41.14	48.51
SR 6-10	3/8	5/8	7.11	11/16	11/16	16.76	19.30	42.92	50.29
SR 6-12	3/8	3/4	7.11	13/16	11/16	16.76	19.30	42.92	50.29
SR 8- 4	1/2	1/4	4.82	13/16	7/8	22.86	21.84	34.79	44.95
SR 8- 6	1/2	3/8	7.11	13/16	7/8	22.86	21.84	36.57	46.73
SR 8- 8	1/2	1/2	9.90	13/16	7/8	22.86	21.84	42.16	52.32
SR 8-10	1/2	5/8	10.41	13/16	7/8	22.86	21.84	43.68	53.84
SR 8-12	1/2	3/4	10.41	13/16	7/8	22.86	21.84	43.68	53.84
SR 8-16	1/2	1	10.41	1-1/16	7/8	22.86	21.84	50.03	60.19
SR10-12	5/8	3/4	12.70	15/16	1	24.38	21.84	44.45	54.61
SR10-14	5/8	7/8	12.70	15/16	1	24.38	21.84	45.97	56.13
SR10-16	5/8	1	12.70	1-1/16	1	24.38	21.84	50.80	60.96
SR12- 8	3/4	1/2	9.90	1-1/16	1-1/8	24.38	21.84	44.45	54.61
SR12-16	3/4	1	15.74	1-1/16	1-1/8	24.38	21.84	52.32	62.48

\* Fractional Tube to Metric SUPERLOK port are available upon request

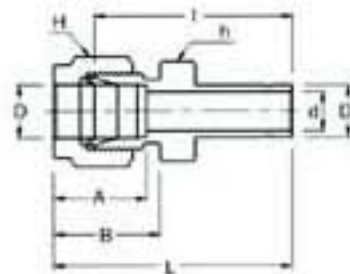
## SR Reducer



### Connects Metric Tubes To Metric SUPERLOK Port

Part No.	Tube O.D.		d Min	Width Across Flat		A	B	I	L
	D	D <sub>1</sub>		h	H				
SR 3M- 4M	3	4	2.4	12	12	12.9	15.3	28.4	35.0
SR 3M- 6M	3	6	2.4	12	12	12.9	15.3	29.5	36.1
SR 3M-10M	3	10	2.4	14	12	12.9	15.3	31.8	38.4
SR 4M- 6M	4	6	2.4	12	12	13.7	16.1	30.5	37.1
SR 6M- 3M	6	3	1.8	14	14	15.3	17.7	29.5	36.9
SR 6M- 8M	6	8	4.8	14	14	15.3	17.7	32.5	39.9
SR 6M-10M	6	10	4.8	14	14	15.3	17.7	33.3	40.7
SR 6M-12M	6	12	4.8	14	14	15.3	17.7	38.9	46.3
SR 8M- 6M	8	6	4.6	15	16	16.2	18.6	32.8	40.3
SR 8M-10M	8	10	6.4	15	16	16.2	18.6	34.5	42.0
SR 8M-12M	8	12	6.4	15	16	16.2	18.6	40.1	47.6
SR 10M- 6M	10	6	4.6	18	19	17.2	19.5	34.8	42.4
SR 10M- 8M	10	8	6.4	18	19	17.2	19.5	35.8	43.4
SR 10M-12M	10	12	7.9	18	19	17.2	19.5	42.2	49.8
SR 10M-15M	10	15	7.9	18	19	17.2	19.5	43.7	51.3
SR 10M-18M	10	18	7.9	22	19	17.2	19.5	43.7	51.3
SR 12M- 6M	12	6	4.6	22	22	22.8	22.0	34.8	44.9
SR 12M- 8M	12	8	6.4	22	22	22.8	22.0	35.8	45.9
SR 12M-10M	12	10	7.7	22	22	22.8	22.0	36.6	46.7
SR 12M-16M	12	16	9.5	22	22	22.8	22.0	43.7	53.8
SR 12M-18M	12	18	9.5	22	22	22.8	22.0	43.7	53.8
SR 12M-20M	12	20	9.5	22	22	22.8	22.0	46.0	56.1
SR 12M-22M	12	22	9.5	24	22	22.8	22.0	46.0	56.1
SR 12M-25M	12	25	9.5	27	22	22.8	22.0	52.3	62.4
SR 16M-12M	16	12	9.1	24	25	24.4	22.0	42.9	53.0
SR 18M-12M	18	12	9.1	27	30	24.4	22.0	44.5	54.6
SR 18M-16M	18	16	12.7	27	30	24.4	22.0	46.0	56.1
SR 18M-20M	18	20	15.1	27	30	24.4	22.0	47.5	57.6
SR 18M-22M	18	22	15.1	27	30	24.4	22.0	47.5	57.6
SR 18M-25M	18	25	15.1	27	30	24.4	22.0	52.3	62.4
SR 20M-16M	20	16	12.7	30	32	26.0	22.0	47.8	57.9
SR 20M-18M	20	18	13.9	30	32	26.0	22.0	47.8	57.9
SR 20M-22M	20	22	15.8	30	32	26.0	22.0	49.3	59.4
SR 20M-25M	20	25	15.8	30	32	26.0	22.0	54.1	64.2
SR 22M-18M	22	18	13.9	30	32	26.0	22.0	47.8	57.9
SR 22M-20M	22	20	15.1	30	32	26.0	22.0	49.3	59.4
SR 22M-25M	22	25	18.3	30	32	26.0	22.0	54.1	64.2
SR 25M-18M	25	18	13.9	35	38	31.3	26.5	50.8	63.1
SR 25M-20M	25	20	15.1	35	38	31.3	26.5	52.3	64.6

## SR Reducer



### Connects Metric Tubes To Fractional SUPERLOK Port

Part No.	Tube O.D.		d Min	Width Across Flat		A	B	I	L
	D	D <sub>1</sub>		h	H				
SR 3M- 2	3	1/8	2.0	12	12	12.9	15.3	26.9	33.5
SR 3M- 4	3	1/4	2.4	12	12	12.9	15.3	29.5	36.1
SR 6M- 4	6	1/4	4.8	14	14	15.3	17.7	31.8	39.2
SR 6M- 5	6	5/16	4.8	14	14	15.3	17.7	32.5	39.9
SR 6M- 6	6	3/8	4.8	14	14	15.3	17.7	33.3	40.7
SR 6M- 8	6	1/2	4.8	14	14	15.3	17.7	38.9	46.3
SR 8M- 6	8	3/8	6.4	15	16	16.2	18.6	34.5	42.0
SR 8M- 8	8	1/2	6.4	15	16	16.2	18.6	40.1	47.6
SR10M- 6	10	3/8	7.1	18	19	17.2	19.5	36.6	44.2
SR10M- 8	10	1/2	7.9	18	19	17.2	19.5	42.2	49.8
SR12M- 8	12	1/2	9.5	22	22	22.8	22.0	42.2	52.3
SR12M-12	12	3/4	9.5	22	22	22.8	22.0	43.7	53.8
SR18M-12	18	3/4	15.1	27	30	24.4	22.0	46.0	56.1
SR18M-16	18	1	15.1	27	30	24.4	22.0	52.3	62.4