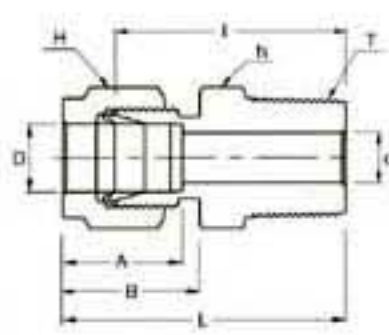


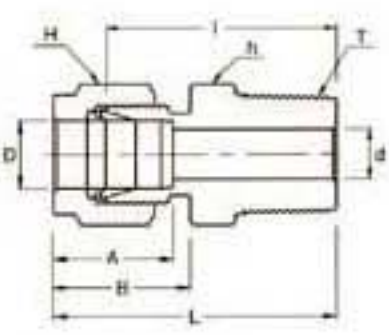
SMC Male Connector



Connects Fractional Tubes To Female NPT Thread

Part No.	Tube O.D. D	T* (NPT)	d Min	Width Across Flat		A	B	I	L
				h	H				
SMC 1- 1N	1/16	1/16	1.27	5/16	5/16	8.63	10.92	20.00	23.83
SMC 1- 2N	1/16	1/8	1.27	7/16	7/16	8.63	10.92	22.35	26.23
SMC 2- 2N	1/8	1/8	2.28	7/16	7/16	12.70	15.24	23.87	30.48
SMC 2- 4N	1/8	1/4	2.28	9/16	7/16	12.70	15.24	28.95	35.56
SMC 2- 6N	1/8	3/8	2.28	11/16	7/16	12.70	15.24	29.21	35.81
SMC 2- 8N	1/8	1/2	2.28	7/8	7/16	12.70	15.24	35.56	42.16
SMC 3- 2N	3/16	1/8	3.04	7/16	1/2	13.71	16.00	24.63	31.24
SMC 3- 4N	3/16	1/4	3.04	9/16	1/2	13.71	16.00	29.71	36.32
SMC 4- 2N	1/4	1/8	4.82	1/2	9/16	15.24	17.78	25.40	32.76
SMC 4- 4N	1/4	1/4	4.82	9/16	9/16	15.24	17.78	30.48	37.84
SMC 4- 6N	1/4	3/8	4.82	11/16	9/16	15.24	17.78	30.98	38.35
SMC 4- 8N	1/4	1/2	4.82	7/8	9/16	15.24	17.78	37.33	44.70
SMC 4-12N	1/4	3/4	4.82	1-1/16	9/16	15.24	17.78	38.86	46.22
SMC 5- 2N	5/16	1/8	4.82	9/16	5/8	16.25	18.54	26.67	34.03
SMC 5- 4N	5/16	1/4	6.35	9/16	5/8	16.25	18.54	31.24	38.60
SMC 5- 6N	5/16	3/8	6.35	11/16	5/8	16.25	18.54	31.75	39.11
SMC 6- 2N	3/8	1/8	4.82	5/8	11/16	16.76	19.30	27.94	35.30
SMC 6- 4N	3/8	1/4	7.11	5/8	11/16	16.76	19.30	32.51	39.87
SMC 6- 6N	3/8	3/8	7.11	11/16	11/16	16.76	19.30	32.51	39.87
SMC 6- 8N	3/8	1/2	7.11	7/8	11/16	16.76	19.30	38.86	46.22
SMC 6-12N	3/8	3/4	7.11	1-1/16	11/16	16.76	19.30	40.38	47.75
SMC 8- 2N	1/2	1/8	4.82	13/16	7/8	22.86	21.84	28.70	38.86
SMC 8- 4N	1/2	1/4	7.11	13/16	7/8	22.86	21.84	33.27	43.43
SMC 8- 6N	1/2	3/8	9.65	13/16	7/8	22.86	21.84	33.27	43.43
SMC 8- 8N	1/2	1/2	10.41	7/8	7/8	22.86	21.84	38.86	49.02
SMC 8-12N	1/2	3/4	10.41	1-1/16	7/8	22.86	21.84	40.38	50.54
SMC 8-16N	1/2	1	10.41	1-3/8	7/8	22.86	21.84	46.99	57.15
SMC10- 6N	5/8	3/8	9.65	15/16	1	24.38	21.84	34.03	44.19
SMC10- 8N	5/8	1/2	11.93	15/16	1	24.38	21.84	38.86	49.02
SMC10-12N	5/8	3/4	12.70	1-1/16	1	24.38	21.84	40.38	50.54
SMC12- 8N	3/4	1/2	11.93	1-1/16	1-1/8	24.38	21.84	40.38	50.54
SMC12-12N	3/4	3/4	15.74	1-1/16	1-1/8	24.38	21.84	40.38	50.54
SMC12-16N	3/4	1	15.74	1-3/8	1-1/8	24.38	21.84	46.99	57.15
SMC14-12N	7/8	3/4	15.74	1-3/16	1-1/4	25.90	21.84	40.38	50.54
SMC14-16N	7/8	1	18.28	1-3/8	1-1/4	25.90	21.84	46.99	57.15
SMC16- 8N	1	1/2	11.93	1-3/8	1-1/2	31.24	26.41	45.21	57.40
SMC16-12N	1	3/4	15.74	1-3/8	1-1/2	31.24	26.41	45.21	57.40
SMC16-16N	1	1	22.35	1-3/8	1-1/2	31.24	26.41	50.03	62.23

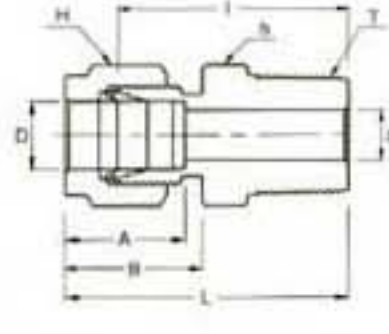
SMC Male Connector



Connects Fractional Tube To Female ISO Tapered Thread

Part No.	Tube O.D. D	T* R(PT)	d Min	Width Across Flat		A	B	I	L
				h	H				
SMC 2- 2R	1/8	1/8	2.28	7/16	7/16	12.70	15.24	23.87	30.48
SMC 2- 4R	1/8	1/4	2.28	9/16	7/16	12.70	15.24	28.95	35.56
SMC 4- 2R	1/4	1/8	4.82	1/2	9/16	15.24	17.78	25.40	32.76
SMC 4- 4R	1/4	1/4	4.82	9/16	9/16	15.24	17.78	30.48	37.84
SMC 4- 6R	1/4	3/8	4.82	11/16	9/16	15.24	17.78	30.98	38.35
SMC 4- 8R	1/4	1/2	4.82	7/8	9/16	15.24	17.78	37.33	44.70
SMC 5- 2R	5/16	1/8	4.82	9/16	5/8	16.25	18.54	26.67	34.03
SMC 5- 4R	5/16	1/4	6.35	9/16	5/8	16.25	18.54	31.24	38.60
SMC 6- 2R	3/8	1/8	4.82	5/8	11/16	16.76	19.30	27.94	35.30
SMC 6- 4R	3/8	1/4	7.11	5/8	11/16	16.76	19.30	32.51	39.87
SMC 6- 6R	3/8	3/8	7.11	11/16	11/16	16.76	19.30	32.51	39.87
SMC 6- 8R	3/8	1/2	7.11	7/8	11/16	16.76	19.30	38.86	46.22
SMC 8- 4R	1/2	1/4	7.11	13/16	7/8	22.86	21.84	33.27	43.43
SMC 8- 6R	1/2	3/8	9.65	13/16	7/8	22.86	21.84	33.27	43.43
SMC 8- 8R	1/2	1/2	10.41	7/8	7/8	22.86	21.84	38.86	49.02
SMC 8-12R	1/2	3/4	10.41	1-1/16	7/8	22.86	21.84	40.38	50.54
SMC12-12R	3/4	3/4	15.74	1-1/16	1-1/8	24.38	21.84	40.38	50.54
SMC16-16R	1	1	22.35	1-3/8	1-1/2	31.24	26.41	50.03	62.23

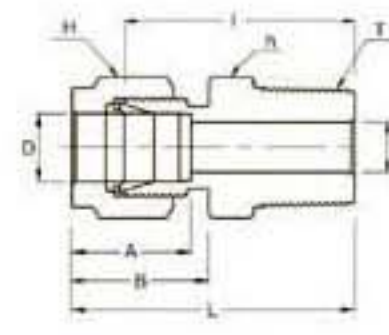
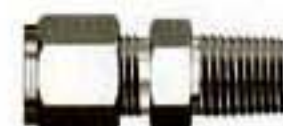
SMC Male Connector



Connects Metric Tube To Female NPT Thread

Part No.	Tube O.D. D	T* (NPT)	d Min	Width Across Flat		A	B	I	L
				h	H				
SMC 2M- 2N	2	1/8	1.7	12	12	12.9	15.3	23.9	30.5
SMC 3M- 2N	3	1/8	2.4	12	12	12.9	15.3	23.9	30.5
SMC 3M- 4N	3	1/4	2.4	14	12	12.9	15.3	29.0	35.6
SMC 4M- 2N	4	1/8	2.4	12	12	13.7	16.1	24.6	31.2
SMC 4M- 4N	4	1/4	2.4	14	12	13.7	16.1	29.7	36.3
SMC 6M- 2N	6	1/8	4.8	14	14	15.3	17.7	25.4	32.8
SMC 6M- 4N	6	1/4	4.8	14	14	15.3	17.7	30.5	37.9
SMC 6M- 6N	6	3/8	4.8	18	14	15.3	17.7	31.0	38.4
SMC 6M- 8N	6	1/2	4.8	22	14	15.3	17.7	37.3	44.7
SMC 8M- 2N	8	1/8	4.8	15	16	16.2	18.6	26.7	34.2
SMC 8M- 4N	8	1/4	6.4	15	16	16.2	18.6	31.2	38.7
SMC 8M- 6N	8	3/8	6.4	18	16	16.2	18.6	31.8	39.3
SMC 8M- 8N	8	1/2	6.4	22	16	16.2	18.6	38.1	45.6
SMC10M- 2N	10	1/8	4.8	18	19	17.2	19.5	28.7	36.3
SMC10M- 4N	10	1/4	7.9	18	19	17.2	19.5	33.3	40.9
SMC10M- 6N	10	3/8	7.9	18	19	17.2	19.5	33.3	40.9
SMC10M- 8N	10	1/2	7.9	22	19	17.2	19.5	38.9	46.5
SMC12M- 2N	12	1/8	4.8	22	22	22.8	22.0	28.7	38.8
SMC12M- 4N	12	1/4	7.1	22	22	22.8	22.0	33.3	43.4
SMC12M- 6N	12	3/8	9.5	22	22	22.8	22.0	33.3	43.4
SMC12M- 8N	12	1/2	9.5	22	22	22.8	22.0	38.9	49.0
SMC12M-12N	12	3/4	9.5	27	22	22.8	22.0	40.4	50.5
SMC14M- 4N	14	1/4	7.1	24	25	24.4	22.0	34.0	44.1
SMC14M- 6N	14	3/8	9.5	24	25	24.4	22.0	34.0	44.1
SMC14M- 8N	14	1/2	11.1	24	25	24.4	22.0	38.9	49.0
SMC16M- 6N	16	3/8	9.5	24	25	24.4	22.0	34.0	44.1
SMC16M- 8N	16	1/2	11.9	24	25	24.4	22.0	38.9	49.0
SMC16M-12N	16	3/4	12.7	27	25	24.4	22.0	40.4	50.5
SMC18M- 8N	18	1/2	11.9	27	30	24.4	22.0	40.4	50.5
SMC18M-12N	18	3/4	15.1	27	30	24.4	22.0	40.4	50.5
SMC20M- 8N	20	1/2	11.9	30	32	26.0	22.0	42.2	52.3
SMC20M-12N	20	3/4	15.9	30	32	26.0	22.0	42.2	52.3
SMC22M-12N	22	3/4	15.9	30	32	26.0	22.0	42.2	52.3
SMC22M-16N	22	1	18.3	35	32	26.0	22.0	47.0	57.1
SMC25M-12N	25	3/4	15.9	35	38	31.3	26.5	45.2	57.5
SMC25M-16N	25	1	21.8	35	38	31.3	26.5	50.0	62.3

SMC Male Connector



Connects Metric Tube To Female ISO Tapered Thread

Part No.	Tube O.D. D	T* R(PT)	d Min	Width Across Flat		A	B	I	L
				h	H				
SMC 2M- 2R	2	1/8	1.7	12	12	12.9	15.3	23.9	30.5
SMC 3M- 2R	3	1/8	2.4	12	12	12.9	15.3	23.9	30.5
SMC 3M- 4R	3	1/4	2.4	14	12	12.9	15.3	29.0	35.6
SMC 4M- 2R	4	1/8	2.4	12	12	13.7	16.1	24.6	31.2
SMC 4M- 4R	4	1/4	2.4	14	12	13.7	16.1	29.7	36.3
SMC 6M- 2R	6	1/8	4.8	14	14	15.3	17.7	25.4	32.8
SMC 6M- 4R	6	1/4	4.8	14	14	15.3	17.7	30.5	37.9
SMC 6M- 6R	6	3/8	4.8	18	14	15.3	17.7	31.0	38.4
SMC 6M- 8R	6	1/2	4.8	22	14	15.3	17.7	37.3	44.7
SMC 8M- 2R	8	1/8	4.8	15	16	16.2	18.6	26.7	34.2
SMC 8M- 4R	8	1/4	6.4	15	16	16.2	18.6	31.2	38.7
SMC 8M- 6R	8	3/8	6.4	18	16	16.2	18.6	31.8	39.3
SMC 8M- 8R	8	1/2	6.4	22	16	16.2	18.6	38.1	45.6
SMC10M- 2R	10	1/8	4.8	18	19	17.2	19.5	28.7	36.3
SMC10M- 4R	10	1/4	7.9	18	19	17.2	19.5	33.3	40.9
SMC10M- 6R	10	3/8	7.9	18	19	17.2	19.5	33.3	40.9
SMC10M- 8R	10	1/2	7.9	22	19	17.2	19.5	38.9	46.5
SMC12M- 4R	12	1/4	7.1	22	22	22.8	22.0	33.3	43.4
SMC12M- 6R	12	3/8	9.5	22	22	22.8	22.0	33.3	43.4
SMC12M- 8R	12	1/2	9.5	22	22	22.8	22.0		