

# Model SSG

## Digital Pressure Gauge / Switch

### Description

SSG model contains Microprocessor in default. Moreover, it is a Pressure Gauge / Switch with characteristics of LED Display, 1~5VDC or 4~20mA(3wire) Analog Output, 2-Channel RELAY Output. Since it uses IP65 structure, there is no limitation with environmental conditions. As Pressure Sensor, Indicator and Switch are integrated in order to realize providing it at low price.

### Features

- ▶ IP65 Protection
- ▶ LED display(Height 10mm)
- ▶ Built-in amplifier circuit(1~5VDC, 4~20mA)
- ▶ Optional 2-channel Relay switching output
- ▶ Measuring range -760mmHg~1,500kgf/cm<sup>2</sup>
- ▶ 0.8%FS accuracy
- ▶ 18~26VDC excitation voltage

### Applications

- ▶ Process control
- ▶ Hydraulics & Pneumatic
- ▶ Compressor Control
- ▶ Chillers
- ▶ Refrigeration Equipment

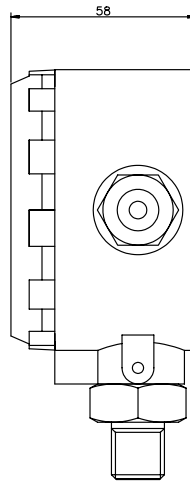
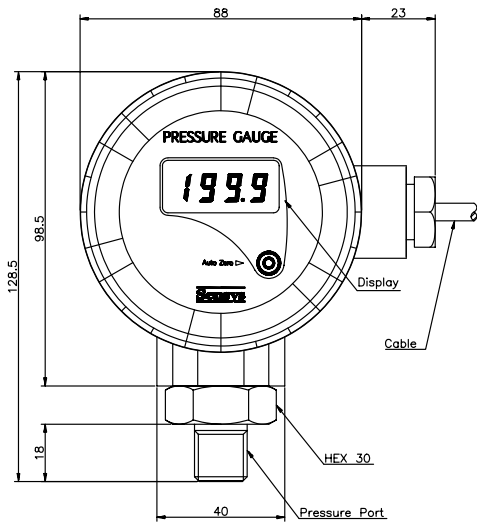


### Specifications

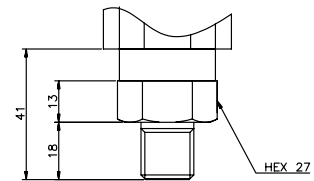
	SSG A / C	SSG B / D
<b>Range</b>	-760mmHg~0, 1, 2, 3, 5, 10, 20, 30, 50, 100, 200, 300, 500, 1000, 1500kgf/cm <sup>2</sup>	
<b>Performance</b>		
Accuracy	±0.8%FS ± 1digit	
Thermal Effect on Zero	±0.08%FS/°C	
Thermal Effect on Span	±0.08%FS/°C	
Compensated Temperature Range	0 ~ 50°C	
Operating Temperature Range	-20 ~ 80°C	
<b>Electrical</b>		
Display	LED(Red Color)	
Max Readout	±1999(3 1/2)	
Height of Digits	10mm	
Excitation	18 ~ 26VDC	
Output	2-Channel Normal Open Relay (5A 28VDC / 10A 125VAC / 5A 250VAC)	
Switching Signal	-	
Analog Signal	1~5VDC, 4~20mA(3Wire)	
Electrical Connection	Cable	DIN Connector
<b>Physical</b>		
Proof Pressure	150%FS Max.	
Burst Pressure	200%FS Min.	
Vibration	49.1m/s <sup>2</sup> {5G}, 10~500Hz	
Shock	490m/s <sup>2</sup> {50G}	
Pressure Port	PT3/8", Other Connection Available on Request	
Media-Wetted Materials	Stainless Steel 304, Titanium 87%, NBR	
Protection	IP65	
Weight	Approx. 700g (Standard type only)	

# Dimension

## ► SSGA(Standard Type)

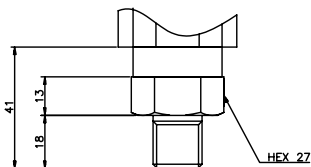
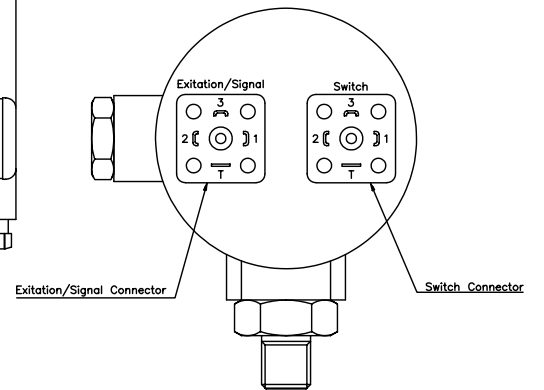
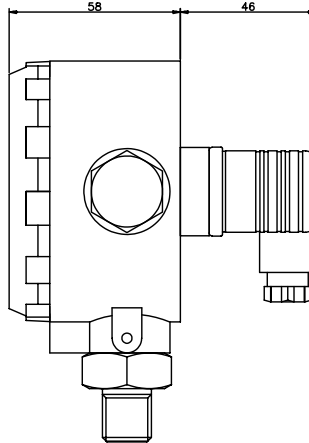
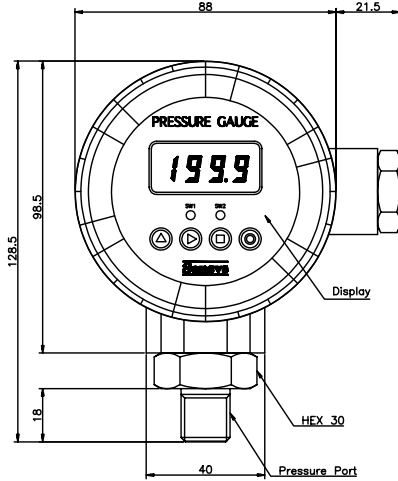


Wire Color	Connections
Red	Input ⊕
White	Common ⊖
Green	Output ⊕
Shield	Earth



200kgf/cm<sup>2</sup> above Pressure Port

## ► SSGB(Switch Output Type)



Excitation/Signal Pin No.	Connections	Switch Pin No.	Connections
1	Input ⊕	1	Switch 1
2	Common ⊖	2	Switch 1
3	Output ⊕	3	Switch 2
T	Earth	T	Switch 2

200kgf/cm<sup>2</sup> above Pressure Port

# Ordering Information

SSG A 10.00 K A A

Model Name

Output

- A : 1~5V
- B : 2-Ch. Relay, 1~5V
- C : 4~20mA(3Wire)
- D : 2-Ch. Relay, 4~20mA(3Wire)

Pressure Range(Display Digit)

- |                                 |                                  |
|---------------------------------|----------------------------------|
| -760 : 0~-760mmHg               | 50.00 : 0~50kgf/cm <sup>2</sup>  |
| 1.000 : 0~1kgf/cm <sup>2</sup>  | 100.0 : 0~100kgf/cm <sup>2</sup> |
| 2.000 : 0~2kgf/cm <sup>2</sup>  | 200.0 : 0~200kgf/cm <sup>2</sup> |
| 3.000 : 0~3kgf/cm <sup>2</sup>  | 300.0 : 0~300kgf/cm <sup>2</sup> |
| 5.000 : 0~5kgf/cm <sup>2</sup>  | 500.0 : 0~500kgf/cm <sup>2</sup> |
| 10.00 : 0~10kgf/cm <sup>2</sup> | 1000 : 0~1000kgf/cm <sup>2</sup> |
| 20.00 : 0~20kgf/cm <sup>2</sup> | 1500 : 0~1500kgf/cm <sup>2</sup> |
| 30.00 : 0~30kgf/cm <sup>2</sup> | CXXX : Compound Pressure         |

Option

A : Normal

Pressure port

- |            |            |
|------------|------------|
| A : PT3/8" | D : PF1/4" |
| B : PF3/8" | E : PT1/2" |
| C : PT1/4" | Q : PF1/2" |

Pressure Unit

- |                         |                        |
|-------------------------|------------------------|
| K : kgf/cm <sup>2</sup> | B : bar                |
| P : psi                 | M : MPa                |
| H : mmHg                | C : cmH <sub>2</sub> O |